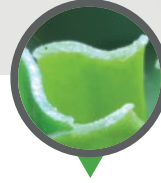




GLOBAL SYN-TURF

GREENING PLANET EARTH

Product Specification Sheet



S Blade-66

USES

- ▶ Landscape
- ▶ Lawns
- ▶ Playgrounds
- ▶ Traffic Medians
- ▶ Pet Areas
- ▶ Commercial or Residential
- ▶ Light-Heavy Traffic

S-SHAPE BLADE

SPECIFICATIONS

Pile Height: 1-3/4"

Turf Gauge: 1/2"

Face Weight: 66 oz./yd²

Backing Weight: 27 oz./yd²

Total Weight: 93 oz./yd²

Stitch Rate: 20/10cm

Stitches/M²: 13860

Material/Dtex: PE10000 + PP4400

Color: Emerald Green and Olive Green with Brown and Green Thatching

Type Of Fiber: PE Monofilament and PP Curled As Thatch

Infill Amount: 1.0 lb./psf.

Primary Backing: Premium GST Backing

Tuft Bind: 13+ lb/force (ASTM D1335)

Blade Type: S-Shape Blade

Permeability: 122.6 inches/hr. (ASTM F1551)

Melting Point: 176 °F (ASTM D2859)

Grab Tear MD: >200 lb./force (ASTM D5034)

Grab Tear CMD: >200 lb./force (ASTM D5034)

Roll Width: 15 ft

Roll Length: 75 ft, 100 ft

Sq. Ft. Per Roll: 1125, 1500

Total Roll Weight: 927 lbs



15 Year Manufacturer's Warranty
8 Year Manufacturer's High Traffic Warranty



Flo-Rite Drainage Technology

