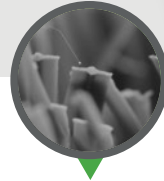




GLOBAL SYN-TURF

GREENING PLANET EARTH

Product Specification Sheet



Trainers Turf-63 Black

USES

- ▶ Pet Areas
- ▶ Sports
- ▶ Landscape
- ▶ Commercial or Residential
- ▶ Medium-Heavy Traffic

STEMGRASS BLADE

SPECIFICATIONS

Pile Height:	1-1/4"
Turf Gauge:	3/8"
Face Weight:	63 oz./yd ²
Backing Weight:	26 oz./yd ²
Total Weight:	89 oz./yd ²
Stitch Rate:	16.5/10cm
Stitches/M ² :	17325
Material/Dtex:	PE12500 + PP4000
Color:	Black
Type Of Fiber:	PE Monofilament Diamond Shaped Stemgrass and PP Curled As Thatch
Infill Amount:	1.0 lb./psf.
Primary Backing:	Premium GST Backing
Tuft Bind:	9+ lb/force (ASTM D1335)
Blade Type:	Stemgrass Blade
Permeability:	62.9 inches/hr. (ASTM F1551)
Melting Point:	176 °F (ASTM D2859)
Grab Tear MD:	>200 lb./force (ASTM D5034)
Grab Tear CMD:	>200 lb./force (ASTM D5034)
Roll Width:	15 ft
Roll Length:	100 ft
Sq. Ft. Per Roll:	1500
Total Roll Weight:	894 lbs



15 Year Manufacturer's Warranty
8 Year Manufacturer's High Traffic Warranty



Flo-Rite Drainage Technology

